

Matica Winter Pinball Arcade Cabinet - Large Version.
Print on normal printer paper. Smaller model and actual game
also available from www.Matica.com



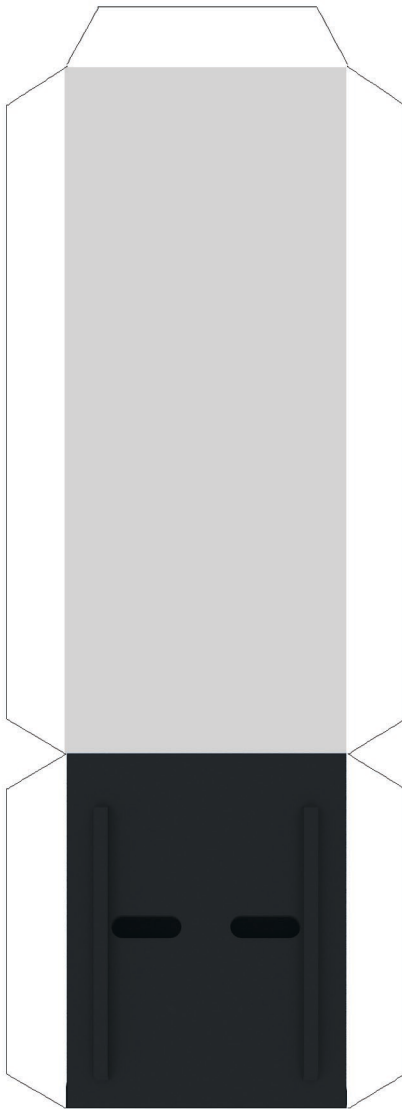
1.



2.



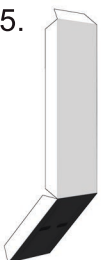
3.



4.



5.



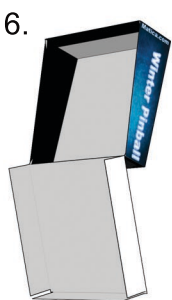
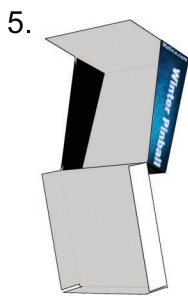
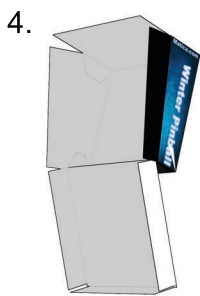
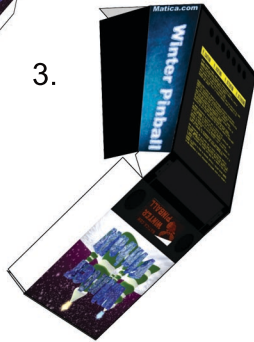
6.



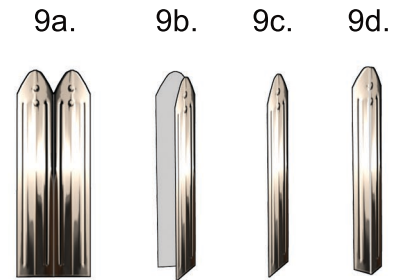
7.



Matica Winter Pinball Arcade Cabinet - Large Version.
 Print on normal printer paper. Smaller model and actual game
 also available from www.Matica.com



No glue needed for stage 6 & 7



Cut out all 4 legs, fold in half (9b) and glue (9c). When glue has dried fold again at right angle (9d).

